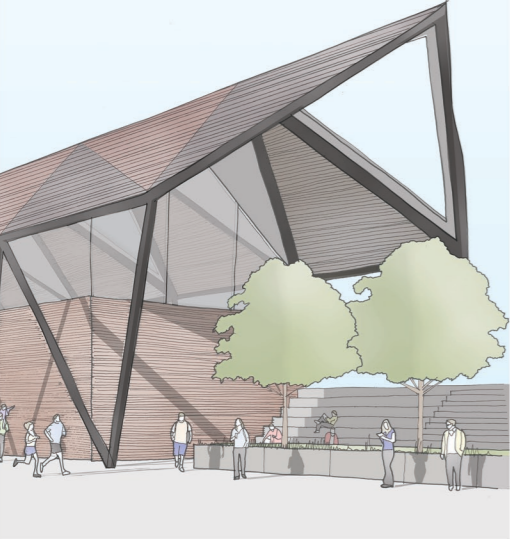




Oak

The building should:

1. Encourage community use.
2. Provide flexible space.
3. Be sustainable.
4. Interpret the character and history of Wolverley.
5. Sit well within its context.
6. Be of a contemporary nature.
7. Use durable and appropriate materials.



Site plan option A.
This keeps the tennis courts in the same area, reducing cost. It also allows the memorial garden to have a strong connection with the building.



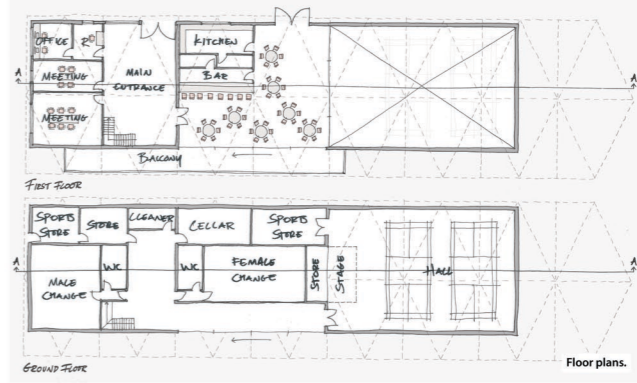
Site plan option B.
This looks at moving the play area to the front of the site where there is a stronger visual connection with the building.



Cafe / bar area overlooking the main hall.
The alignment of the building and the form of the roof maximises and frames the view of the church.



Section A-A.



Floor plans.

Local inspiration.



The prominence of St. John the Baptist church.



The widespread usage of red brick.

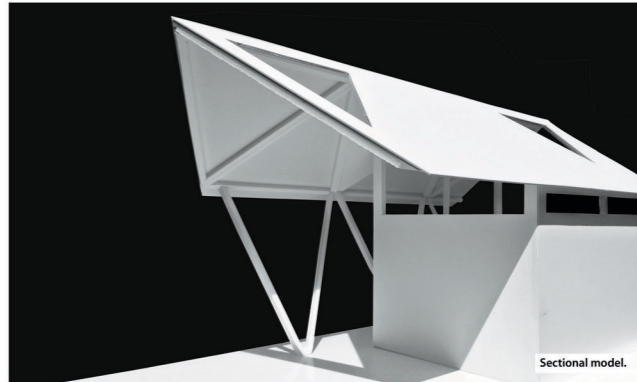
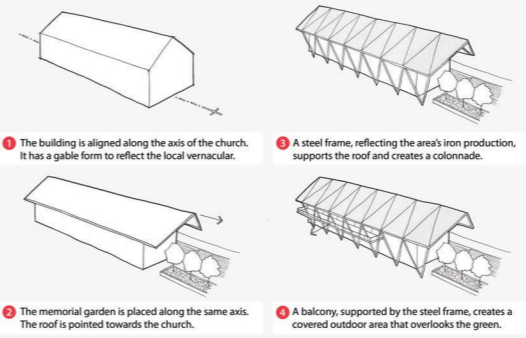


The prominence of tiled, gabled roofs.



The area's connection to iron production.

Design process.



Sectional model.

Precedent study.
Relevant examples of projects by others.



Nonhym Limelight Music Consulting by Dia Architecture. Exposed steel columns.



Sussex House by Wilkinson King. Triangular rooflights.



Bangor Aquatic Centre by Donal McCann. Retractable seating / adaptable spaces.



Hope on the Horizon Garden by Matthew Keightley. Example of a memorial garden.