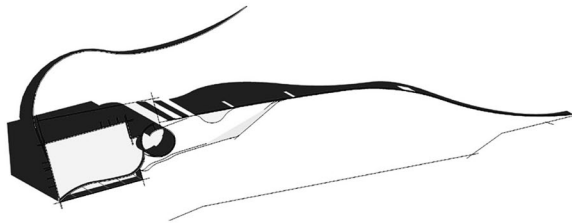


Wolverley has a spectacular relationship with its landscape which is dominated by its amazing geology. The village, its spaces and buildings are situated on, carved from, built entirely or in part from the local red sandstone. Some of the buildings have sections hewn from the solid bedrock while others are founded on huge blocks of stone possibly quarried from the very spot where the buildings stand. Roads, paths, steps, caves, underground tunnels and even an animal pound have been carved, shaped and formed from the soft bedrock. In some areas the sandstone rises out of the ground to form cliff faces and overhangs that expose the geological strata even more clearly, revealing layer upon layer of deposited sand and the occasional interlayer of lighter, grey gravels.

The low lying areas along the banks of the River Stour are the only level areas in the village. Elsewhere, there are slopes, steep gradients and cliff faces that create a complex collection of inter-connected spaces and places. Today, from the perspective of a vehicle, the various parts of the village can feel somewhat disparate. However, on foot one has far clearer perception of the relationships between the key features of the village. In particular, St John the Baptist church is situated centrally on the highest point in the village and links the lower lying area to the north with the church hall and the memorial hall site at the higher level to the west.

Our design concept seeks to strengthen the relationship between the Memorial Hall site and the historic village centre. Spatial, visual and physical links are enhanced with the formation of a linear change in level to reflect that present to the northeast of the site. The proposed change in level is demarcated with a wall starting at the site boundary, gradually increasing in height until it forms the outer wall of the new building. The wall and building are used to organise the site topography, form the built spaces and associated external spaces such as footpaths, play space and car parking.

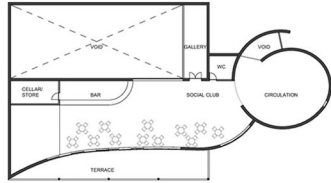


NOTES

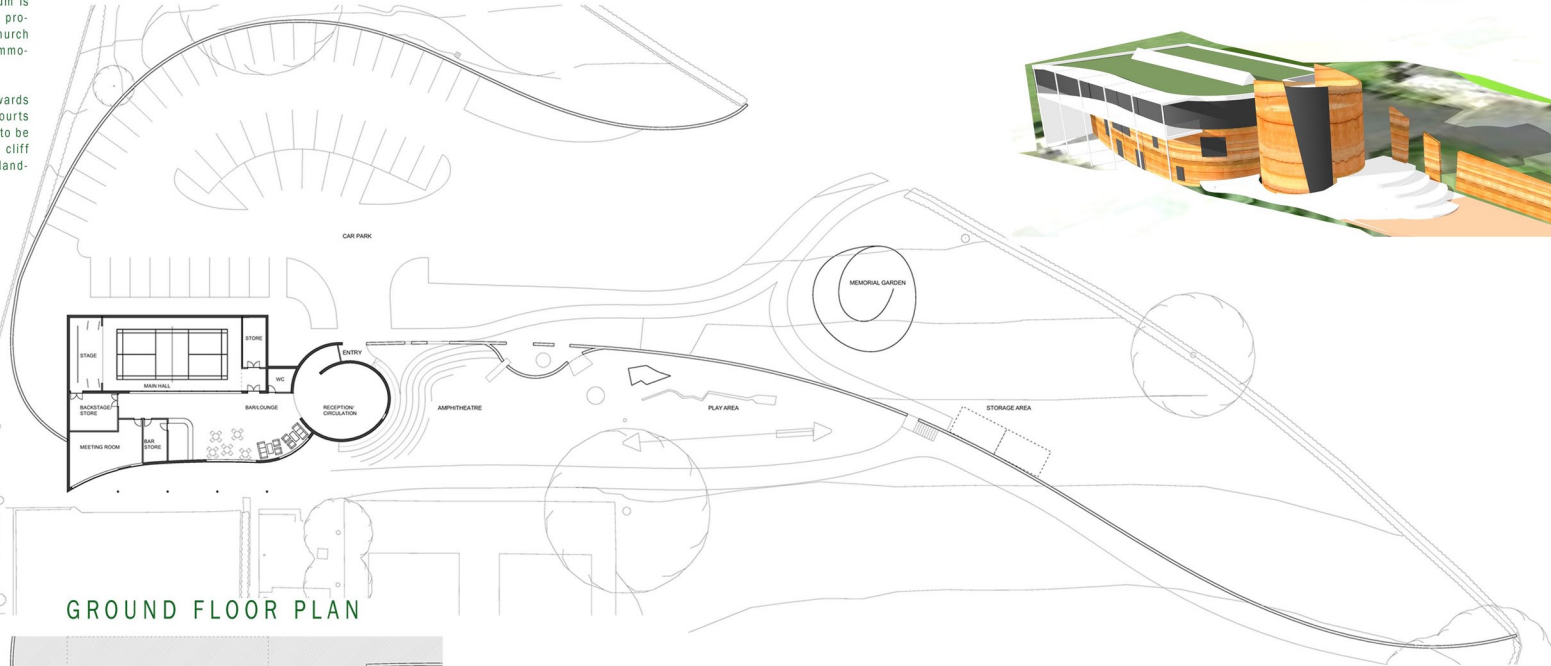
The building, features, functions and external spaces are arranged along the length of the sculptural feature wall for the entirety of the site. Externally, features including seating areas, a memorial garden, play space, stores and an amphitheatre are formed by, attached to and enclosed by the wall.

Spaces within the building area accessed via a dominant cylindrical entrance 'drum'. The drum is visible from the A449 and provides views towards the church and the village whilst accommodating lifts and staircases.

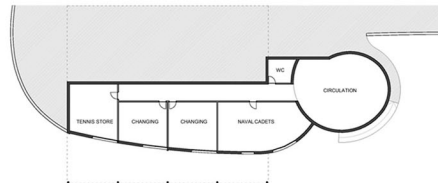
The principle elevation towards the bowling green, tennis courts and playing field is designed to be reminiscent of a sandstone cliff face to reflect the local landscape.



FIRST FLOOR PLAN



GROUND FLOOR PLAN



LOWER GROUND FLOOR PLAN

Gross Internal Floor Areas

Lower Ground: 200sqM

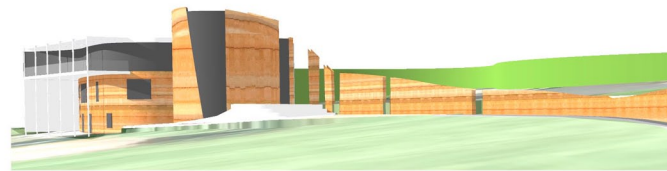
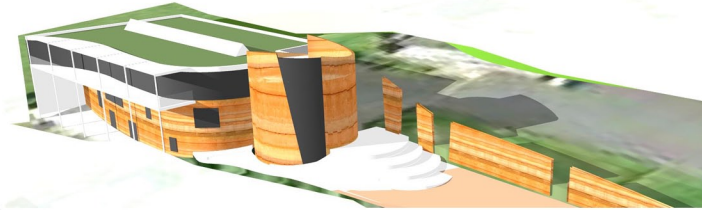
Ground Floor: 650sqM

First Floor: 350sqM

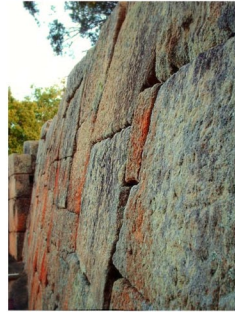
Total: 1200sqM



LAYOUT & ACCOMMODATION



MATERIALS



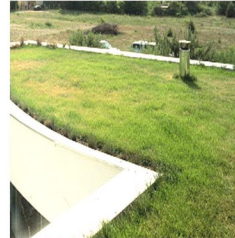
SAND STONE



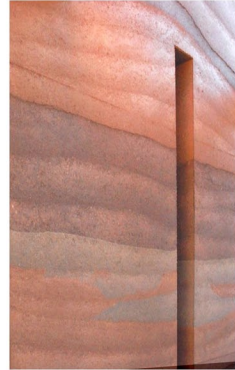
SLEEPERS



SHEET CLADDING



GRASS ROOF



RAMMED EARTH

S P O R T S & S O C I A L C L U B P R O J E C T